

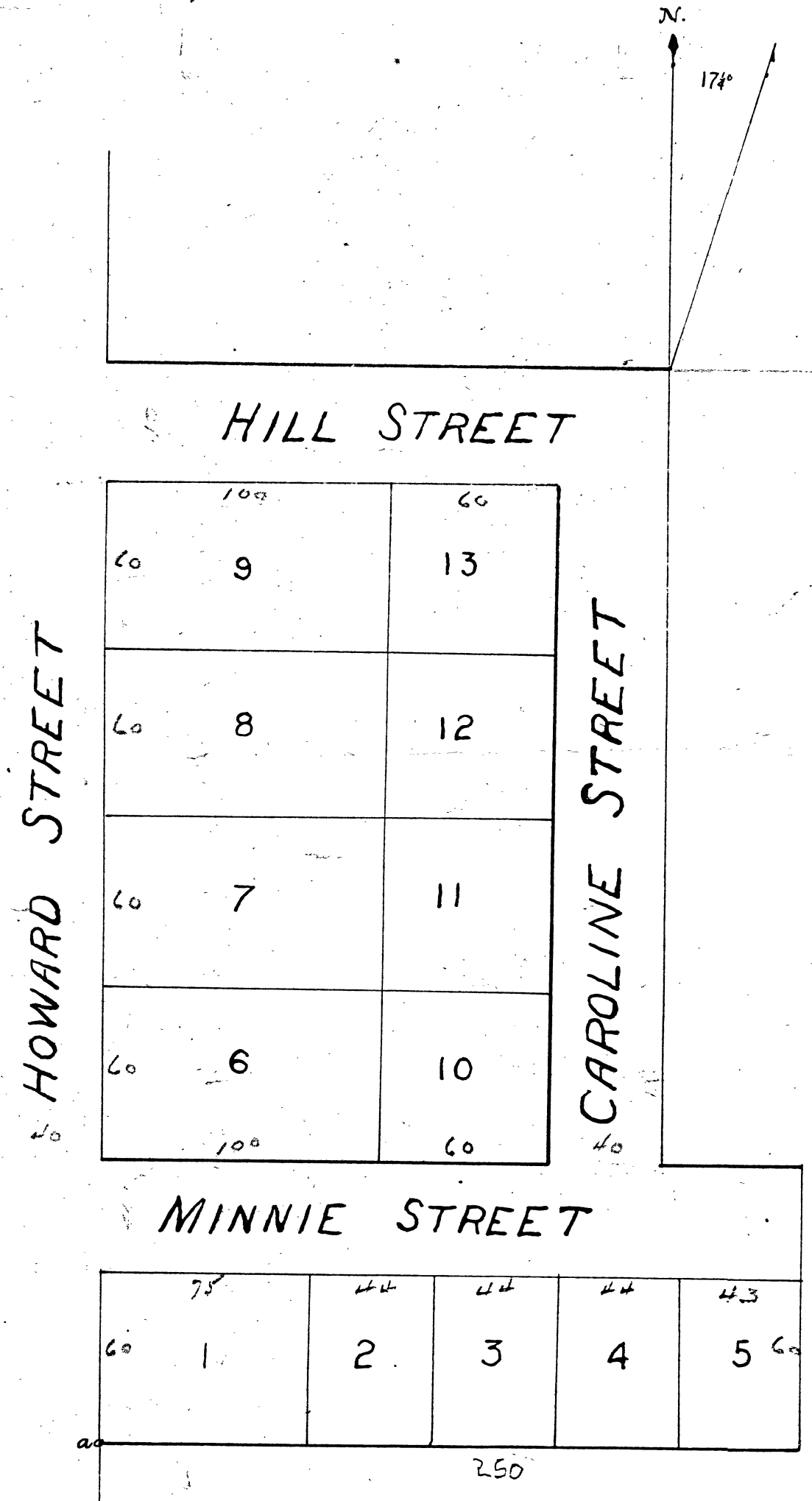
A4D

*Field Notes:*  
 Streets; each street is 40 feet wide.  
 Lots: lot N<sup>o</sup> 1 is 75 by 60 feet.  
 Lots N<sup>o</sup> 2, 3 & 4 are each 44 by 60 feet.  
 Lot N<sup>o</sup> 5 is 43 by 60 feet.  
 Lots N<sup>o</sup> 6, 7, 8 & 9 are each 60 by 100 ft.  
 Lots N<sup>o</sup> 10, 11, 12 & 13 are each 60 by 60 ft.  
 Reference Point: "a"  
 A Draw Bar of Freight Car planted  
 in the ground 726 feet West of the North-  
 east corner of the South-east 1/4 of Sec 34.  
 T.7N. R.10W. M.D.M.  
 A.L.Cox, C.E. March 1879

Seal

Filed in Office at Request of William  
 Howard April 7<sup>th</sup> A.D. 1879 at 30  
 minutes past 10 o'clock A.M.  
 Dan S. Wood County Recorder  
 By J. E. Ball Deputy Recorder

S.F. & N.F.R.R.



Plan  
 of the  
 TOWN OF  
**HOWARDS**  
 SONOMA COUNTY  
 CALIFORNIA  
 Scale 50 feet to an inch