

RUSSIAN RIVER HEIGHTS

Δ 7° 07
R 2000
T 124.37
L 248.42

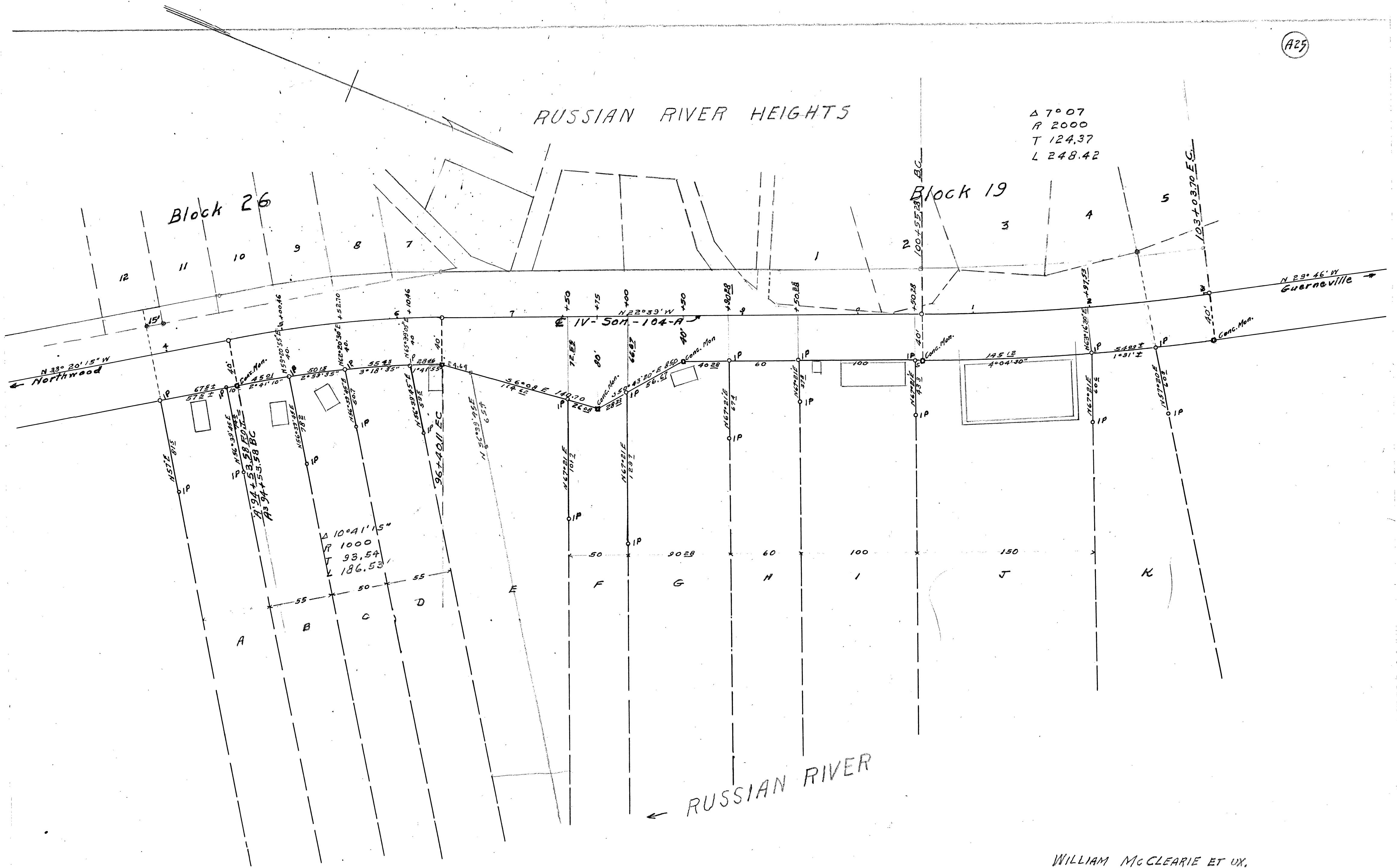
Block 26

Block 19

N 33° 20' 15" W
← Northwood

N 29° 46' W
→ Guerneville

← RUSSIAN RIVER



WILLIAM McCLEARIE ET UX,
PARCELS EAST OF
IV - SON - 104 - A

Note. Letters designating parcels are for
identifying descriptions only, and are not
to be used in deed descriptions.

Scale 1" = 50' G.S. Abbott 3-5-95